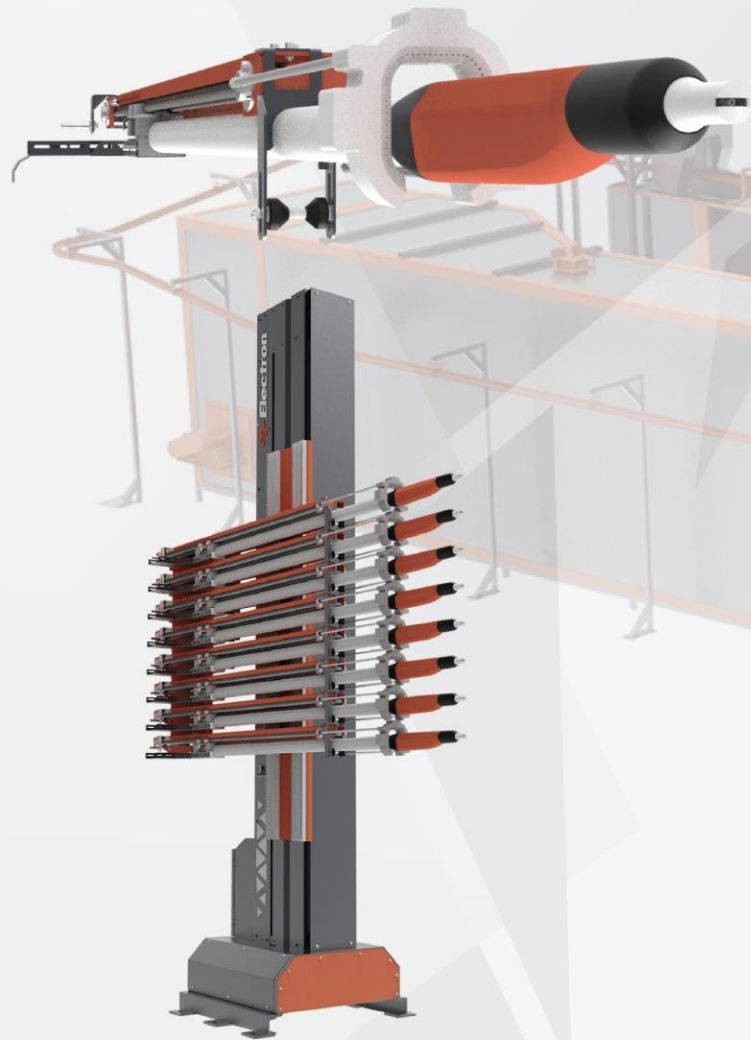


*Your Dedicated  
Partner in industrial*

COATING EQUIPMENT  
&  
ADHESIVE SOLUTIONS



SMART ENGINEERING  
COATING EQUIPMENTS



 **Electron**



  
**sames**





# ABOUT US

Smart Engineering: Excellence in Industrial Finishing & Hot Melt Dispensing Smart Engineering is a trusted leader in delivering industrial finishing and adhesive solutions across the region. With more than 15 years of hands-on expertise, we specialize in the supply, installation, and maintenance of cutting-edge powder coating, liquid coating, and hot melt adhesive systems. As the authorized distributor of Electron Powder Coating, Sames Kremlin, and Rimco, we bring world-class equipment and technology directly to our customers. Beyond supplying machinery, our team provides comprehensive technical support, training, and after-sales service, ensuring reliability and efficiency in every production line. At Smart Engineering, our mission is clear — to deliver quality-driven, innovative, and sustainable solutions that help industries achieve consistent performance and long-term success.

## INDUSTRIAL COATING SYSTEM

Elevate Your Production with our Advanced Coating Solutions Unlock new levels of efficiency and quality with our cutting-edge coating technologies:

## INDUSTRIAL ROBOT ELECTROSTATIC PAINTING SYSTEM

Advanced Automation for Powder & Liquid Coating Upgrade your surface finishing operations with our comprehensive range of industrial robot electrostatic painting equipment. Our solutions include both powder coating robots and liquid coating robots-delivering flawless, efficient, and consistent results for every application.

## POWDER COATING MACHINES

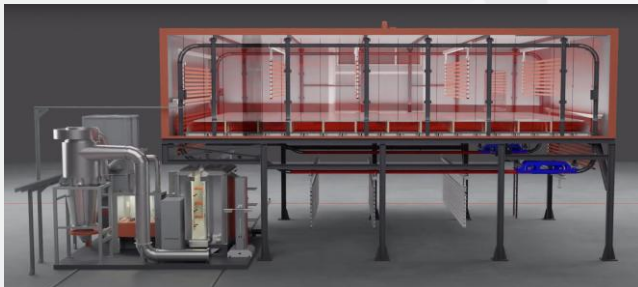
Experience superior, eco-friendly finishes with our advanced powder coating systems. Designed for precision and durability, our machines deliver vibrant, long-lasting protection for all your industrial components.

## LIQUID COATING WET PAINTING MACHINES

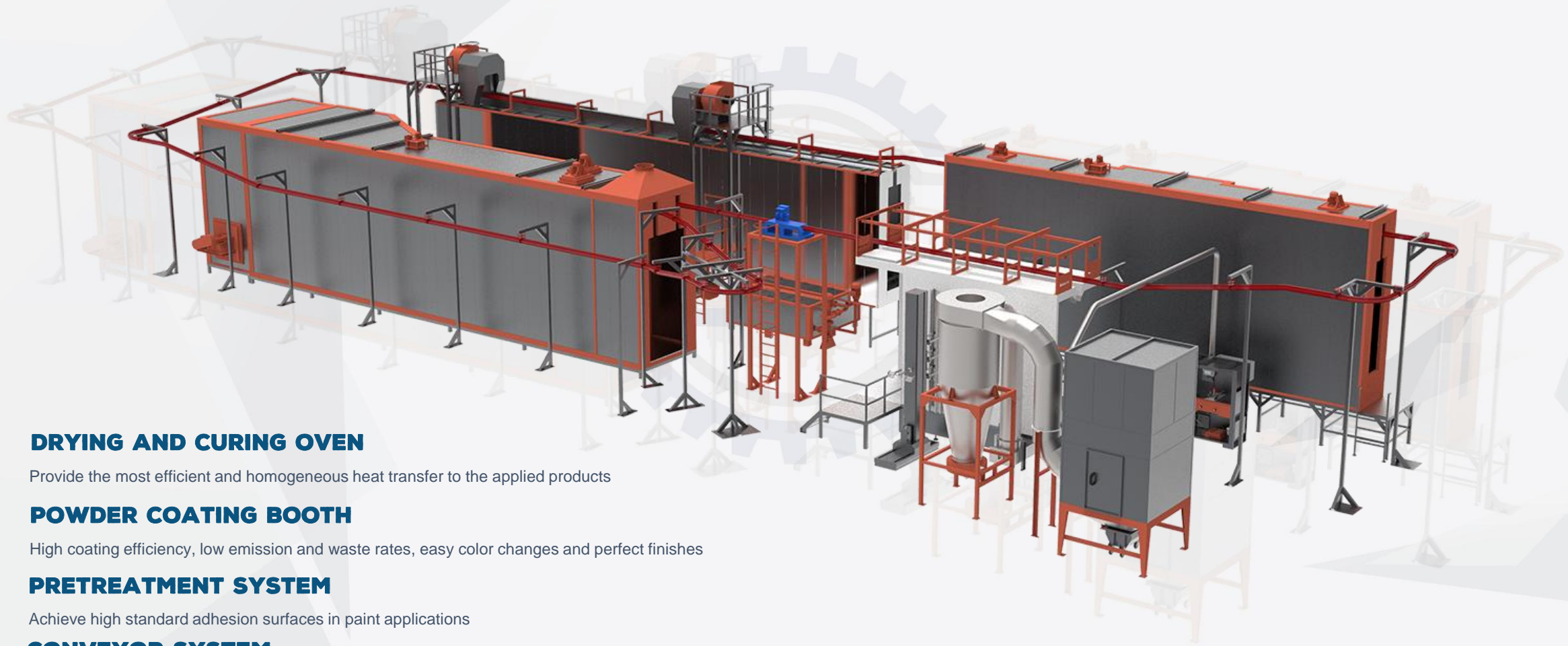
Achieve flawless, high-quality results with our versatile liquid coating solutions. Perfect for a wide range of applications, our systems ensure consistent, smooth coverage tailored to your unique production needs.

## HOTMELT GLUING SYSTEMS

Streamline your assembly process with our high-performance hotmelt gluing machines. Enjoy rapid application and strong, reliable bonds across diverse materials, boosting your productivity and product integrity. Transform your manufacturing process with our reliable, innovative coating and bonding equipment engineered for excellence in every application.







## **DRYING AND CURING OVEN**

Provide the most efficient and homogeneous heat transfer to the applied products

## **POWDER COATING BOOTH**

High coating efficiency, low emission and waste rates, easy color changes and perfect finishes

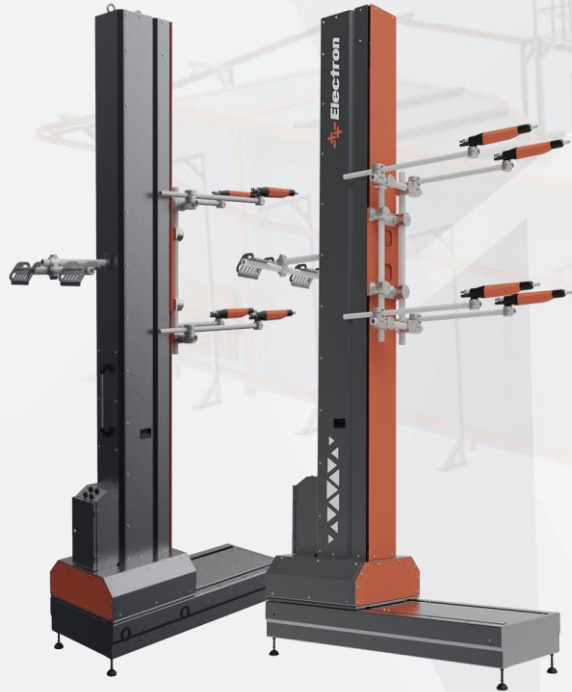
## **PRETREATMENT SYSTEM**

Achieve high standard adhesion surfaces in paint applications

## **CONVEYOR SYSTEM**

Ensure the fastest, most efficient and reliable transfer of products between processes

# POWDER COATING DEVICE



## E-ROBOT+3 Z-X Series

E-ROBOT+3 Z is a vertical axis coating robot designed for your automatic guns. This robot performs high-efficiency painting by providing precise vertical movement at the specified speed and rotational acceleration. With its smart mechanism and asynchronous motor, it offers excellent repeatability even under challenging conditions. Thanks to its timing belt design, it provides long-lasting use and easy maintenance advantages.

## E-COAT+3 C1 Series



E-GUN+3 Series Powder Coating Guns convert the signals sent from the control unit into static electrical energy and provide the unit with the necessary feedback signals. Various products with high precision and efficiency can be covered thanks to different types of nozzles.

BLUE  
TOOTH  
CONNECTION

120kV  
THE WORLD'S  
MOST  
POWERFUL

LED  
LIGHT

## E-COAT+3 C3 Series

E-GUN+3 New generation automatic powder guns are designed to work in harmony with improved powder paint control modules. It also exhibits high performance in paint disposal with both E-FEED+3 AP and E-FEED+3 INJ.

The aim is to provide the healthiest and highest quality results after the application by increasing the powder coating surface coating performance.

E-GUN+3 C3 automatic pistol product exhibits a more effective painting performance thanks to its shrinking volume and developed technology.

## E-CONTROL+3 Series



E-CONTROL+3 10C | Device Cabinet W/10 Slots

E-CONTROL+3 15C | | Device Cabinet W/15 Slots

E-CONTROL+3 Smart | System Control Panel

## E-COAT+3 MASTER Series



E-COAT+3 MASTER Series devices are upper segment devices where pneumatic and electrical parameters are digitally controlled from the front panel.

Its electrical controls give the opportunity to adjust the air values both independently and proportionally while remaining dependent on voltage and current. The factory settings, along with 50 different customizable electrical/pneumatic specifications, dual triggering options, PLC automation and bluetooth connectivity, make the E-COAT+3 MASTER the optimal solution for especially advanced manual and automated applications.

The sub-10  $\mu\text{A}$  micro charge control option, as well as the 120kV-120 $\mu\text{A}$  maximum charge capacity and built-in LED lighting features create a unique coating experience for users. It can respond to different application needs with automatic, manual options and a wide range of accessories.

## E-FEED+3 PM3 Series



E-FEED+3 PM3 Series powder coating center is the ultimate product in powder coating transfer. It has the fastest and most detailed cleaning feature of all powder coating stations. The user-friendly interface makes the system easy to use. It provides homogeneous powder distribution thanks to its efficient powder transfer system.





## **NANOGUN + AIRSPRAY MANUAL LOW PRESSURE ELECTROSTATIC GUN**

The Nanogun+ Airspray is specially designed for spraying liquid solvent-based materials at low pressures in many markets. Its lightweight and its ergonomic design make it the best choice for the operators to improve their comfort.

### **THE ONE AND ONLY MANUAL ELECTROSTATIC GUN LOW PRESSURE**

High Transfer Efficiency for unrivaled paint savings

Optimum Coverage for outstanding finishing application

The Lightest electrostatic gun for the comfort of the operators

### **Performance**

- 1 Automatic control of high voltage to maintain constant paint charge for higher Transfer Efficiency
  - 2 Optimal wrap-around and penetration effects for unrivaled paint savings with BOTH high current and high voltage
- ◆ High-quality coverage and regular thickness for outstanding finishing application
  - ◆ Wide range of viscosities to cover all product specifications at reduced costs

# NANOBELL 801 ROBOTIC NON-ELECTROSTATIC ROTARY BELL ATOMIZER



**SAMES AUTOMOTIVE EXPERTISE  
ACCESSIBLE TO ALL INDUSTRIAL PLANTS!**

**Premium Finishing Application**

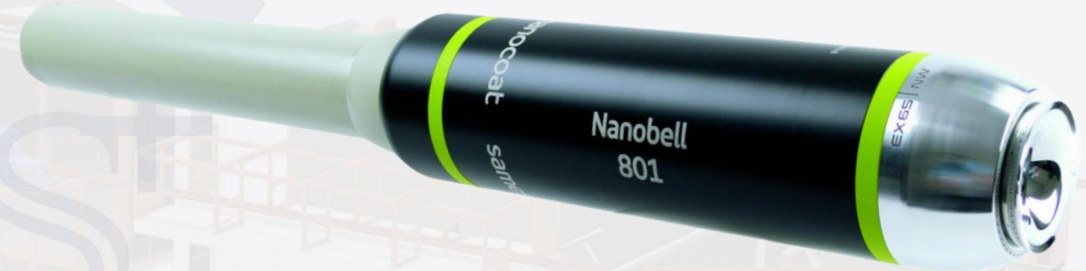
**High Transfer Efficiency**

**Safe & Easy Installation**

## **Performance**

- 1 High bell speed rotation up to 65 000 RPM at various flowrates for fine atomization
- 2 Patented Hi-TE Technology combining straight and vortex air for unsurpassed transfer efficiency
- ◆ Fast trigger response and minimal paint loss due to the proximity of trigger valve

Sames has designed its first robotic non-electrostatic rotary bell atomizer to meet the need of high finishing applications allowing paint savings at a reduced investment. Nanobell 801 Robotic combines Airspray and rotary bell technologies to offer all the benefits of rotary bell atomization to non-electro applications at an enhanced production speed with easier set-up and operation.



## **Why did we develop the NANOBELL 801?**

For years, we have been introducing the most sophisticated bell atomizers to the marketplace. The PPH 707 is a best seller in the Automotive industry and recognized as the most robust, internal charge atomizer. The Accubell 709 EVO, brings the utmost savings in paint thanks to its high transfer efficiency and fast & clean canister dosing technology.

- 3 Narrow Wide air shroud (NW) allowing fast & flexible pattern to fit complex-shaped parts to paint
- 4 Compact design and lightweight allowing installation anywhere either fixed or on a reciprocator
- 5 Complete range of magnetic bell cups for full bell/bell processes
- ◆ Easy controlling with BSC 300 bell speed controller offering remote monitoring

Our first non-electrostatic rotary bell atomizer has been designed to meet the need of high finishing applications allowing paint savings at a reduced investment. Nanobell 801 combines Airspray and Rotary Bell technologies to offer all the benefits of rotary bell atomization to non-electro applications at an enhanced production speed with easier set-up and operation.



# RIMCO Hot Melt System-NS4

## System controller

Advanced Siemens PLC controls paired with a user-friendly HMI touchscreen allow for intuitive operation, easy parameter adjustments, and real-time system monitoring. Password protection and clear status indicators further simplify day-to-day use and maintenance scheduling

## ADHESIVE PRESSURE REGULATOR

An **Adhesive Pressure Regulator** in Rimco hotmelt systems is a precision control device that maintains a **steady and accurate adhesive pressure**

## Melter lid

## FILTER

Filters are quick to replace or clean, ensuring hassle-free operation.

## Melter

The Melter is the heart of Rimco's hotmelt system, delivering perfectly melted adhesive with precision, efficiency, and reliability.

## Start/Stop button



RJ050 series hot melt glue machine controller is a new special controller designed for the current situation of small capacity hot melt glue machine. The product makes comprehensive use of the most advanced electronic technology in the world, and perfectly combines the color display, temperature controller and other functions into one, which can accurately control the temperature of the equipment. 5 inch touch screen design, with over temperature warning, over temperature power off protection, thermocouple reverse connection alarm, sensor abnormal power off and other alarm functions





# RIMCO Hot Melt System-NS5

ADJUSTMENT BUCKLE

System controller

Advanced Siemens PLC controls paired with a user-friendly HMI touchscreen allow for intuitive operation, easy parameter adjustments, and real-time system monitoring. Password protection and clear status indicators further simplify day-to-day use and maintenance scheduling

RJ050 series hot melt glue machine controller is a new special controller designed for the current situation of small capacity hot melt glue machine. The product makes comprehensive use of the most advanced electronic technology in the world, and perfectly combines the color display, temperature controller and other functions into one, which can accurately control the temperature of the equipment. 5 inch touch screen design, with over temperature warning, over temperature power off protection, thermocouple reverse connection alarm, sensor abnormal power off and other alarm functions

Start/Stop button

Melter

The Melter is the heart of Rimco's hotmelt system, delivering perfectly melted adhesive with precision, efficiency, and reliability.

Melter lid



# CERTIFICATE

In order for our products to be sustainable and remain at the same high quality, we develop systems that will ensure the development of our processes, and we certify these systems and products with the following certificates to meet international standards and ensure reliability in all geographies.

**ISO 9001:2015**  
Quality Management System  
Certificate



**CE**  
European CE

**TSEK**  
Turkish Standards  
Certificate



**Research and Design Center**  
Ministry of Industry and Technology  
of the Republic of Turkey



**ATEX**  
European Conformity  
Certificate



**UKR-SEPRO**  
Ukraine Conformity  
Certificate



**UL**  
Product Safety  
Certificate



**GOST-R**  
Russia Conformity  
Certificate



**FM**  
Product and System Safety  
Certificate



**GAZMER**  
Natural Gas and Energy  
Certificate





## Rim Series R314 Hotmelt Handgun

### Ergonomic and Compact Design

The Rimco Series R3-314 is designed to be lightweight and shaped for maximum comfort, enabling easy and fatigue-free handling in even the most challenging adhesive and sealant tasks.

### Cool and Safe Handle

All heated components and adhesive pathways are safely housed inside the gun body, keeping the insulated handle cool to touch. This minimizes burn hazards and ensures safe operation during extended use.

### Versatile Extrusion Options

The Series R314 Extrusion models accommodate a wide selection of standard and extended nozzles, offering various orifice sizes to meet specific precision needs.

### Precise Control of Swirl Patterns

Equipped with Controlled Fiberization™ technology, the Series R314S W delivers adjustable pattern thickness and density. It allows adhesive to be applied as close as 6.4 mm to substrate edges, with variable widths from 6 mm to 152 mm.

### Adjustable Spray Widths

The Series R314S Spray models provide spray widths up to 20 mm. Independent air controls for atomizing and spray pattern offer quick and easy modification of spray shape, size, and density.

### High-Viscosity Adhesive Reliability

The LBS versions of the Series R314 are specifically optimized for thick adhesives. Paired with Rimco Series Gear-Pump Melters, an integrated microswitch in the handle activates the motor clutch, ensuring smooth and consistent adhesive delivery.



## Rim series Adhesive Mini Applicator

### Top Reliability for Packaging Applications

Compact construction with fast-acting controls enables rapid adhesive application, improving throughput.

Precise stitch pattern control minimizes adhesive use, saving costs.

Available in compact designs or fully customizable multi-module systems tailored to your production needs.

Modular design makes maintenance simple, reduces downtime, and offers options such as self-cleaning and ultra-pure cutoff functionality.

Energy-efficient housings with built-in filtration promote safety, durability, and clean operation.

Wide range of durable modules and solenoids designed for consistent, reliable adhesive application.



## Rim Series Hot Melt Adhesive Hoses

Cut energy use by up to 10%, lowering operational costs.

Reduce warm-up duration by up to 7%, speeding production start-up.

Prevent adhesive damage, blockages, and overheating problems in hoses and nozzles.

Maintain uniform temperature and consistent adhesive viscosity for exact application control.

Improve process stability and repeatability across production lines.

Engineered for long-lasting, dependable use in tough industrial environments.

Designed to maintain temperature stability up to 232°C.

Hose lengths available from 0.6 meters up to 19.80 meters, providing flexibility to suit various installation requirements





## **SMART ENGINEERING COATING EQUIPMENTS**

### **“Engineering Smarter Solutions for Industry.”**

“At Smart Engineering, we pride ourselves on engineering smarter solutions for industry. Whether you need expert support, product details, or service assistance, our team is ready to help. Get in touch with us today—we’re just a call or message away.”

#### **SMART ENGINEERING**

**Office 104, Gym Building, Near  
Everyday Centre,  
Al Manakh , Sharjah, UAE.**

**Phone: +971 6 525 4214**

**Email:sales@smartengme.ae**

